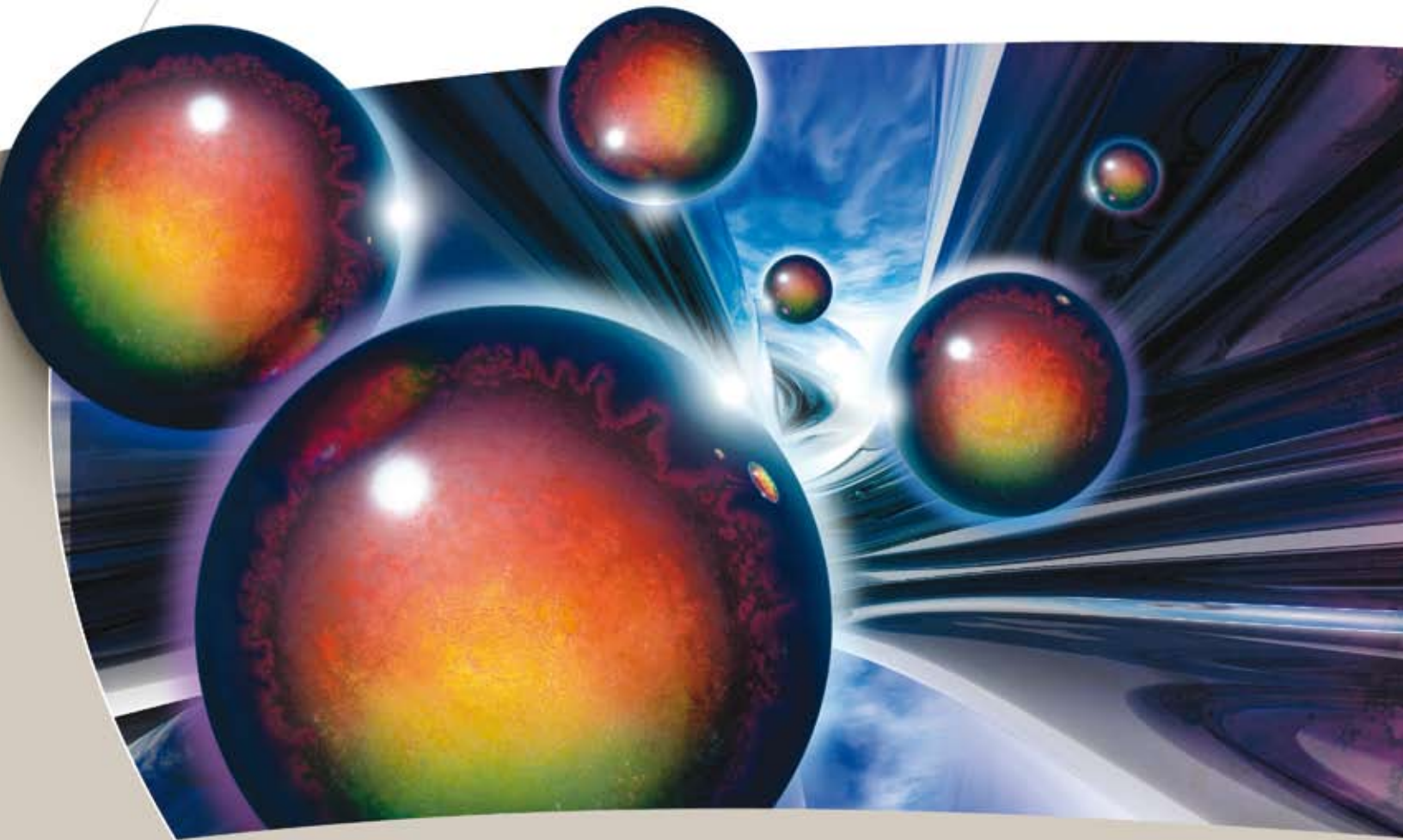


DuPont™ Alesta® Powder Coatings
Performance that lasts.



CoatingSolutions

DuPont™ Alesta® – Your One-Stop Supplier for Powder Coatings

DuPont™ Alesta® Powder Coatings deliver superior coverage and transfer efficiency so you can get more done in less time. But higher yields are just the beginning. Available in a variety of technologies for a broad range of applications, DuPont™ Alesta® Powder Coatings are easy to use and backed by the technical support of DuPont specialists. Our team is dedicated to helping you find new ways to improve productivity and reduce overall costs – so you can deliver superior quality products while increasing profits.

- **DuPont™ Alesta® Powder Coatings meet the performance standards set by leading manufacturers and industry organizations.**

- DuPont™ Alesta® Powder Coatings are designed to provide tough, durable and beautiful finishes. Available in a wide array of RAL and standard colors and surface effects, we feature over 400 stock products ready to ship same day.
- DuPont™ Alesta® Powder Coatings feature robust formulations that result in fewer line stoppages and a uniform finish – saving you both time and money.
- The complete line of DuPont™ Alesta® Powder Coatings includes innovative solutions such as high temperature resistant, anti-graffiti, chrome-look, low energy, antimicrobial, anti-gassing and non-TGIC polyesters, so you can deliver customized solutions across a broad range of applications.
- With virtually no VOCs, no hazardous waste and up to 98% product utilization, DuPont™ Alesta® Powder Coatings are the environmentally responsible choice.

DuPont™ FasTrac™



When you have a project that requires immediate attention, the DuPont™ FasTrac™ custom color match service delivers the quick turnaround you need, with a 5-day color match and a 10-day production schedule.

- Uses simple guidelines to qualify products for this unique service
- Helps coaters respond quickly to customers that require just-in-time manufacturing or wish to reduce inventory carrying costs
- Unbeatable quality and customer satisfaction
- Available in urethane, TGIC polyester, hybrid or epoxy technologies

DuPont™ Alesta® Color Capability

- Infinite possibilities, including RAL and standard color qualities
- Wide range of smooth and textured finishes, including: grain, wrinkles, rivers (high-gloss) and ridges (low-gloss)
- Wide range of gloss levels, between 0 and 95+ units
- Excellent distinctness of image (DOI)

We feature over 400 stock products ready to ship same day from our standard color selector and RAL product line.



DuPont™ Alesta® AM (Antimicrobial) Coatings

- Patented antimicrobial powder coating technology uses environmentally sustainable silver ions to resist growth and spread of microbes even on lightly scratched surfaces
- Available in a full range of colors, textures, glosses and chemistries
- EPA-registered and recognized by the Food and Drug Administration
- Ideal for hospitals, medical equipment, water treatment plants, food service packaging areas and equipment, pharmaceutical labs and childcare facilities



DuPont™ Alesta® Spotless (Anti-Graffiti) Coatings

- A light wipe with Isopropyl Alcohol removes most permanent black marker ink from graffiti-resistant, Alesta® Spotless urethane polyester exterior powder coated surfaces
- Most all-purpose cleaners remove permanent marker stains and 4-day-old spray paint
- Ideal for white dry marker boards, school or public lockers, rest room structures, signs in public areas, indoor and outdoor recreation equipment



DuPont™ Alesta® Metallic Coatings

- Designed to provide dramatic good looks with virtually the same application and physical performance properties as non-metallic formulations (available in dry blend and bonded solutions)
- Bonded metallic offers a reclaiming application advantage
- Ideal for automotive accessories, motorcycle gas tanks, wheels and bicycles



DuPont™ Alesta® ECO Coatings

- The environmentally responsible choice
- Manufactured using 70% recycled materials, produces zero VOC emissions, uses less energy to cure and approved by the U.S. Green Building Council
- Attractive, sand texture hides substrate imperfections
- Ideal for patio and office furniture, playground and exercise equipment, sports and recreation equipment, lawn and garden tools, as well as automotive accessories



DuPont™ Alesta® CL (Chrome-look) Coatings

- Revolutionary coating system uses powder filler and Vacuprime primer to build a smooth, level metalization surface and a shiny, chrome-look finish
- Eliminates hazardous chemicals and costly sanding, buffing or polishing
- Environmentally friendly, cost-efficient chrome surfacing
- Stands up to some of the toughest OEM wheel industry testing specifications



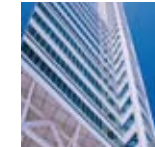
DuPont™ Alesta® E-Wrinkles Coatings

- Tough mechanical and chemical properties add value to any product
- Ideal for metal weights, gym equipment, speakers, slot machines, chair and table legs, tool boxes, shelving and much more



DuPont™ Alesta® Jollipop Coatings

- Highly transparent decorative coatings formulated in weatherable TGIC polyester chemistry
- Exhibit excellent smoothness and depth of image
- Ideal for ornamental applications such as sun catchers and gazing balls



DuPont™ Alesta® AR (Architectural) Coatings

- A wide variety of aesthetically pleasing colors and surface textures give architects the design freedom to coordinate with other building materials
- Meet AAMA 2603, 2604, 2605 specifications
- Excellent weatherability, elasticity, impact- and abrasion-resistance, regardless of color or surface choice
- Ideal for hand railings, fencing, residential architectural aluminum and steel



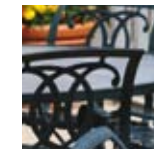
DuPont™ Alesta® LE (Low Energy) Coatings

- Alesta® LE (Low-Energy) Coatings save time, energy and money
- Designed to lower energy costs that impact your bottom line, these specially developed coatings cure at 325° F with quicker cure times than average TGIC powder coatings
- A 25% average reduction in BTUs required for curing – that's the outstanding bottom line for Alesta® LE (Low-Energy) outdoor coatings



DuPont™ Alesta® High Temperature Coatings

- Looks good regardless of exposure to temperatures from 500° to 1,000° F
- Resists de-lamination, cracking and gloss loss experienced by standard coatings at high temperatures
- Ideal for barbecues, automotive mufflers, stoves or any heated surface



DuPont™ Alesta® Antique and Textured Coatings

- Decorative, two-tone, textured coatings display metallic colors in surface peaks and solid colors in valleys
- Excellent coverage hides substrate imperfections
- Ideal for office furniture, toolboxes, patio furniture, wrought iron work and much more



DuPont™ Alesta® ULB (Ultra Low Bake) Coatings

- Designed specifically for heat sensitive substrates
- Single or dual coat can be quick-cured at temperatures as low as 260° F
- Earth-friendly – with zero solvent emissions and virtually no VOCs, lead or heavy metals
- Available in a wide variety of colors and textures, as well as antimicrobial formulation
- Ideal for coating medium density fiberboard (MDF) and creates seamless edges that will not delaminate



DuPont™ Colorsplash™ by Prismatic Powders®

- More than 100 vibrant Colorsplash™ colors, textures and metallic special effect finishes available
- One-coat Blaze Illusion polyester resin sparkles with color and a glittering effect – ideal for metal office furniture, wire shelving, small and large appliances, boats, jet skis, toolboxes, toys, garden equipment and much more
- Two-coat Flare Illusion polyester resin offers jewel-like colors that change with light source and viewing angle – adding visual excitement to automotive wheels, bicycles, motorcycles and many more products



DuPont CoatingSolutions

Contact us to learn how our dedicated team can help you find new ways to improve productivity and reduce overall costs – so you can deliver superior quality products while increasing profits.

In the U.S., call 1-800-247-3886 or e-mail info.powder@usa.dupont.com

In Canada, call 1-888-447-2598 or e-mail powder.info@can.dupont.com

www.powder.dupont.com



CoatingSolutions